

## NOTICE OF PUBLIC INFORMATION CENTRE #2

# Webequie Supply Road Project Environmental Assessment / Impact Assessment

Webequie First Nation (WFN) is undertaking a provincial Environmental Assessment (EA) and federal Impact Assessment (EA/IA) for the Webequie Supply Road Project ("the Project").

The proposed Webequie Supply Road is an all-season road of approximately 107 km in length from Webequie First Nation to the mineral deposit area near McFaulds Lake. The preliminary corridor for the road consists of a northwest-southeast segment running 51 km from Webequie First Nation to a 56 km segment running east, before terminating near McFaulds Lake. A total of 17 km of the corridor is located within Webequie First Nation Reserve lands. The alternative routes for the supply road within the preliminary corridor that will be examined and evaluated in the EA/IA are shown in the accompanying Key Plan.

### PROJECT PURPOSE

The purpose of the Project is to create an all-season corridor that will facilitate the movement of materials, supplies and people from the Webequie Airport to the proposed mine development and mineral exploration activities in the McFaulds Lake area of Northwestern Ontario. The Project is a means for WFN to better service their community and contribute to the local economy by providing employment and economic development opportunities.

### THE PLANNING PROCESS

On October 8, 2021, the Minister of the Environment, Conservation and Parks approved the Terms of Reference (ToR) with amendments for the Webequie Supply Road EA Study. The Webequie Supply Road EA Study is being carried out according to the approved ToR and the requirements of the Environmental Assessment Act. In addition, on February 24, 2020, the Impact Assessment Agency Canada published a Notice of Commencement of the Impact Assessment (IA) and provided WFN with Tailored Impact Statement Guidelines for meeting the requirements under federal Impact Assessment Act. The Project is now in the Impact Statement (IS) phase. For the Project, the two levels of government have indicated a willingness to follow a coordinated assessment process, and for the proponent to produce one body of documentation with the results of the study in an Environmental Assessment Report/Impact Statement (EAR/IS). A draft EA/IS will be made available for review and comment, and at that time, the public, Indigenous communities, and other interested persons will be informed when and where the EAR/IS can be reviewed.

### PUBLIC INFORMATION CENTRE #2

Public Information Centres (PIC) are being held to provide interested parties an opportunity to learn about the ongoing assessment of alternatives that is being conducted as part of the EA/IA study and provide feedback. The PIC will consist of a presentation at 2 p.m. followed by an informal drop-in centre with display information about the project. Project Team representatives will share information on EA/IA process, studies being conducted, criteria for evaluation of route alternatives and alternative locations for supportive infrastructure (e.g., aggregate source areas, construction camps) including results from the assessment, feedback we have heard to-date, and future consultation and engagement opportunities. You are invited to attend the PIC, which have been scheduled as follows:

**October 3 & October 4, 2023**

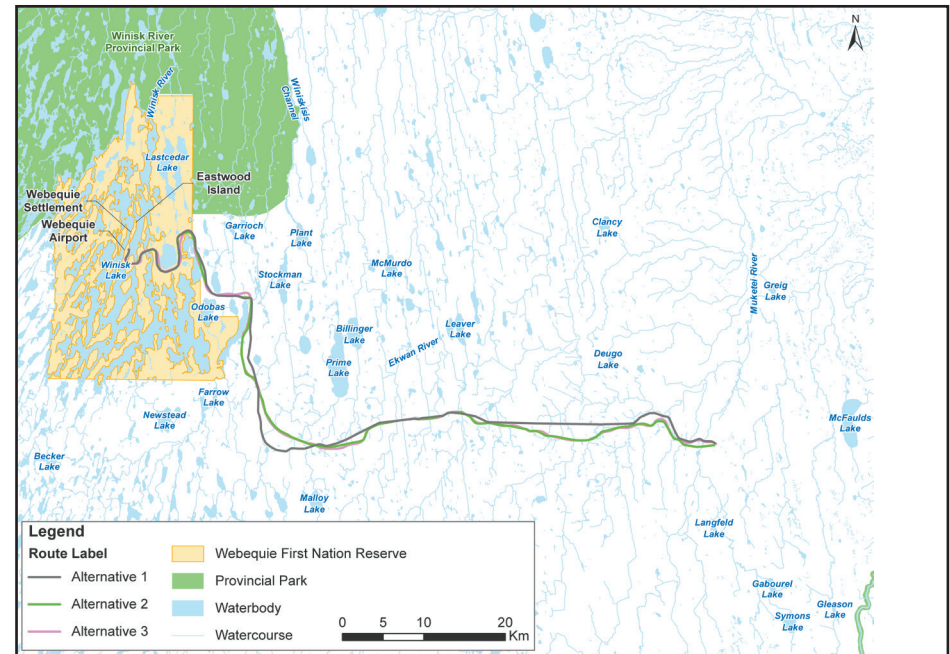
2 p.m. to 4 p.m. & 6 p.m. to 8 p.m.

Victoria Inn Hotel and Convention Centre, 555 Arthur St W, Thunder Bay

**October 12, 2023**

6 p.m. to 8 p.m.

Cedar Meadows Resort & Spa, 1000 Norman St, Timmins



Key Plan – Location of Webequie Supply Road Route Alternatives

If you cannot attend the in-person sessions, you can also find the information on the study progress and updates on our website: <https://www.supplyroad.ca/>. The Public Information Centre venues are wheelchair accessible and there will be a kid's corner with colouring books at the venues. The PIC livestream will be available on the project website: [www.supplyroad.ca](http://www.supplyroad.ca).

### CONTACT

If you are unable to attend the PIC, or have any comments or questions regarding the study, you are welcome to contact the following:

#### Michael Fox

Regional Consultation Lead  
Webequie First Nation  
699 Mountain Road  
Fort William First Nation, ON P7J 1C1  
tel: 807-472-6147  
fax: 807-577-0404  
e-mail: [michael.fox@supplyroad.ca](mailto:michael.fox@supplyroad.ca)

#### Don Parkinson

Consultation Lead  
AtkinsRéalis  
191 The West Mall  
Toronto, ON M9C 5K1  
tel: 416-252-5315 ext. 52584  
fax: 416-235-5356  
e-mail: [don.parkinson@atkinsrealis.com](mailto:don.parkinson@atkinsrealis.com)

#### Leslie Spence

Local Consultation Lead  
Webequie First Nation  
P.O. Box 268  
Webequie, ON P0T 3A0  
tel: 807-353-6531  
fax: 807-353-1218  
e-mail: [leslies@webequie.ca](mailto:leslies@webequie.ca)

**WSR**  
**WEBEQUIE**  
**SUPPLY ROAD**

All personal information included in a submission - such as name, address, telephone number and property location - is collected, maintained, and disclosed by the Ministry of the Environment, Conservation and Parks for the purpose of transparency and consultation. The information is collected under the authority of the *Environmental Assessment Act*, or is collected and maintained for the purpose of creating a record that is available to the general public, as described in s. 37 of the *Freedom of Information and Protection of Privacy Act*. Personal information you submit will become part of a public record that is available to the general public unless you request that your personal information remain confidential. For more information, please contact the Ministry of the Environment, Conservation and Parks Freedom of Information and Privacy Coordinator at (416) 327-1434.

This notice was first published on September 26, 2023.

WSR240-WEB-PR-PUN-0004

WSR-Notice of Public Information Centre #2-2023-09-25.